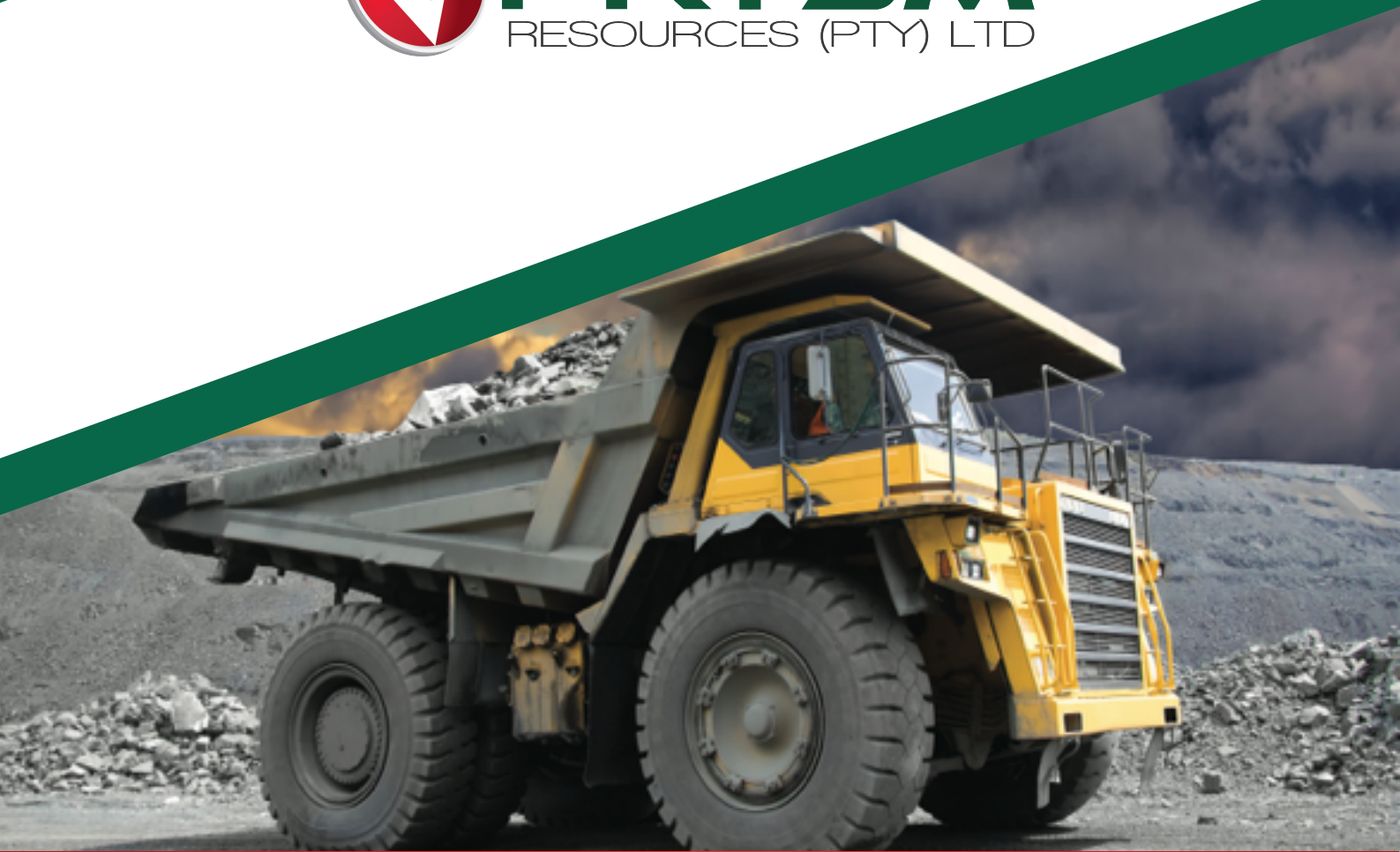


**PRYSM**  
RESOURCES (PTY) LTD



## Company Profile

Prysm Resource is a privately owned and operated **consultancy, engineering and manufacturing company**, providing independent, strategic and tactical advice and personalised professional services to exploration and mining companies, engineering firms, financial institutions and investors.

Prysm Resource draws on a diverse team of highly qualified and experienced professionals with practical hands-on experience in mining projects' design, management, operation, installation and evaluation. Furthermore, Prysm provides general engineering, manufacturing and mining services to the mining industry.

Whilst mine optimisation, mine design and planning, and project management remain our primary focus areas for the consultancy division; our services also include capital and operational cost estimation, financial evaluation of projects, exploration management, geological modelling, ventilation design, geotechnical modelling, and Health and Safety practices.

Through its association with several consulting associates and contractors, Prysm Resources can provide a wide range of expertise in knowledge and experience to a broad client base that requires a high-quality professional response to their needs.

Prysm Resources builds and jealously safeguards relationships with our clients by committing ourselves to maintaining the highest possible service and confidentiality standards.

## Vision

Prysm Resource strives to contribute to unlocking potential in the mining and resource sectors by delivering the best practical and cost-effective solutions to every client and project.

Prysm Resource strives to provide competitive, high-quality, and individualised customer service while encouraging employee creativity, motivation and teamwork in a continuously improving environment.

Prysm Resource strives to be a world-class company committed to the health and safety of all its employees, providing quality products and services to all our clients.

Prysm Ventilation Services endeavours to unlock and develop individual talent and capabilities in all its members and associates.

## Mission

At Prysm Resource, we are committed to remaining at the forefront of our profession, offering improved value and innovation to our clients. We aim to create a sustainable future for all by:

- ✔ Providing services tailored to specific customer needs.
- ✔ Applying cost-effective fit-for-purpose ventilation engineering systems and sound financial planning.
- ✔ Introducing continuous process improvement strategies.
- ✔ Acting with integrity and living it through all our actions.
- ✔ Playing an active role in conserving the environment and the health and safety of all.
- ✔ Endeavouring to comply with and, if possible, exceed all relevant BBBEE requirements.

# Underground Mining

**Project Management** - Desktop to Feasibility Studies.

**Desktop, Scoping, Pre-Feasibility & Feasibility Studies** - We have and continue to provide highly capable and efficient Desktop, Scoping, Pre-Feasibility and Feasibility technical services and expertise for all possible project scope definitions.

Our specialised geology, mining engineering, metallurgical and mechanical engineering services manage the entire project from start to completion or integrate with Mining House Project Teams during any planning stage for any project scope definition.

**Mine Optimisation** - We provide mine optimisation services using trade-off studies as part of our mine design and scheduling solutions. Our unique optimisation approach enables our clients to understand where their best possible value or best possible strategic solution resides.

We develop detailed financial and mining Techno-Economic Models to perform the best value or the best solution mining option selection. These models enable dynamic mining and economic parameter trade-offs necessary to test and rank the best possible economic option.

**Mine Design & Scheduling** - Our services include short/long-term mine design, scheduling, and reserve reconciliation. We pride ourselves in design optimisation.

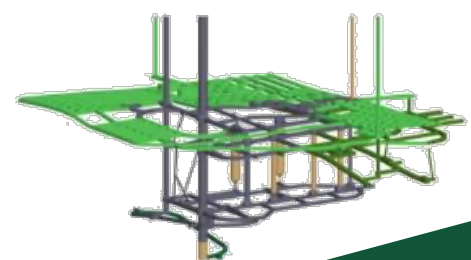
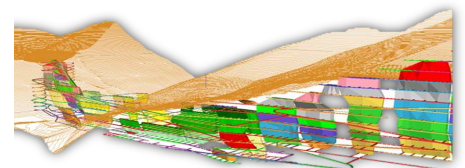
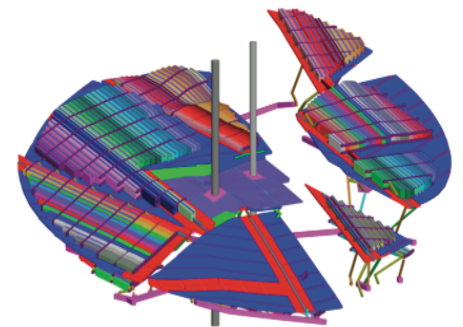
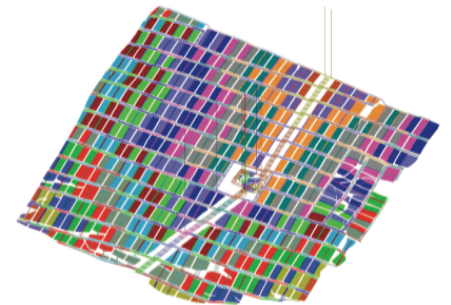
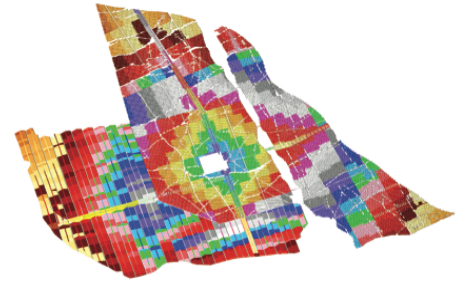
All underground mine designs and schedules are completed using three-dimensional mine planning packages. We can create trade-off designs and update designs and schedules more accurately, incorporating all necessary design criteria.

In addition, we optimise blending schedules in long-term and short-term applications. Our deliverables include the provision of all data in three dimensions.

**Resource Optimisation** - Before completing full three-dimensional designs. PRYSM optimises underground mineable Resources. Based on mining parameters and targets, we can provide clients with sensitivity analyses and economic mining envelopes together with their sequence to ensure the highest economic value.

**Resource to Reserve** - We provide a comprehensive Resource to Reserve solution with a high degree of intellectual analysis.

**Due Diligence Studies & Evaluations** - Our technical abilities, Resource and Reserve optimisation, project implementation and practical mining experience establish a sound analytical foundation to perform Due Diligence reviews. Our Due Diligence deliverables include sound and measurable improvement strategies to enhance the specific project.





# Surface Mining

**Project Management** - Desktop to Feasibility Studies.

**Desktop, Scoping, Pre-Feasibility & Feasibility Studies** - We have and continue to provide highly capable and efficient Desktop, Scoping, Pre-Feasibility, and Feasibility technical services and expertise for all possible project scope definitions, including (but not limited to); Expansion initiatives of existing open pit mining operations; Maximum value / Optimal mining strategy (design and extraction methodologies); and Optimal and practical Equipment fleet simulations, optimised to improve project value whilst maintaining the highest possible revenue and value drivers which is process plant input requirements.

Our specialised geology, mining engineering, metallurgical and mechanical engineering services manage the entire project from start to completion or integrate with Mining House Project Teams during any planning stage for any project scope definition.

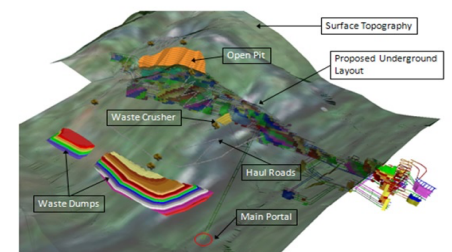
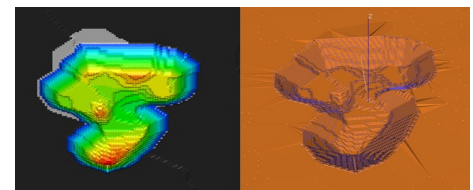
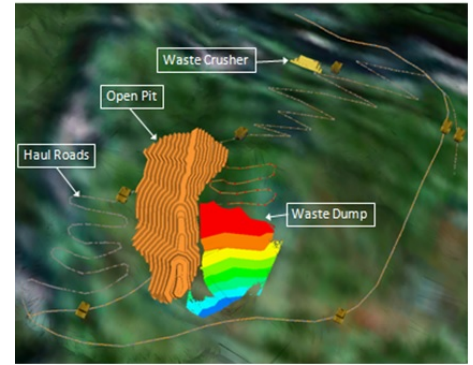
**Mine Optimisation** - We provide open pit optimisation services (NPV scheduler or Whittle software) as part of our mine design and scheduling solutions. We use our open pit mine optimisation capabilities to assess whether projects should progress to a pre-feasibility study. Our unique open pit optimisation approach enables our clients to understand where their best possible value or best possible strategic solution resides.

We develop detailed financial and mining Techno-Economic Models to perform the best value or solution open pit shell selection. These models enable dynamic mining and economic parameter trade-offs necessary to test and rank the best performing economic or blended pit perimeters.

**Mine Design & Scheduling** - Our services include long-term mine design and scheduling, short-term mine design and scheduling and reserve reconciliation. We pride ourselves in optimising pit design (optimal ramp and access layout and location in conjunction with the best possible bench and berm configuration for each pit design). In addition, we optimise blending schedules in long-term and short-term applications. Our deliverables include providing all data in three dimensions and specific bench plans indicating the mining and pushback sequence required to achieve the set production targets.

**Resource to Reserve** - We provide a comprehensive Resource to Reserve solution with a high degree of intellectual analysis.

**Due Diligence Reviews & Evaluations** - Our technical abilities, Resource and Reserve optimisation, project implementation and practical mining experience establish a sound analytical foundation to perform Due Diligence reviews. Our Due Diligence deliverables include sound and measurable improvement strategies to enhance the specific project.





# Hydro Mining

Hydraulic mining in semi or near-saturated conditions has a clear advantage over load and haul operations. Many open pit load and haul mining operations in weathered ore bodies are adversely affected by inclement weather to a far greater extent than would be the case with hydraulic mining. Thus, high water table situations can be tackled successfully, although concomitant dewatering is still required to remove free water. Hydraulic mining does not create but reduces the airborne dust problem often associated with fine tailings dumps and dry mining techniques. This is becoming a more and more important factor as society becomes less tolerant of environmental impacts.

Setting up a hydraulic mining operation requires the same planning process as any other surface mining operation. The execution of the operation then requires skills, expertise and experience to obtain the optimum results. Our Hydro Re-Mining service includes Project Design, Re-Mining Equipment Manufacturing, Project Construction / Installation and Hydraulic Re-Mining Operations.





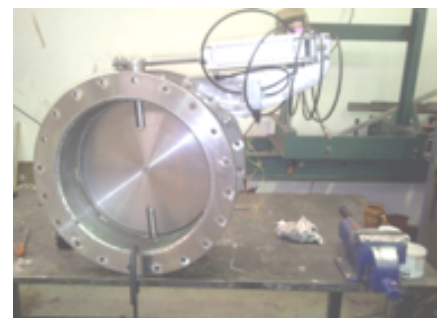
# Manufacturing

Prysm Manufacturing provides competitive high-quality manufacturing services and individualised customer service while encouraging employee creativity, motivation and teamwork in a continuously improving environment.

Prysm Manufacturing strives to be a top-class company committed to the health and safety of all its employees, providing quality products and services to all our clients.

We work closely with our customers to understand their needs. We recognise the strengths of those we work with and focus our efforts on helping our clients overcome their weaknesses.

We treat all individuals with courtesy, dignity and respect and work together as a team to provide quality services. We work cooperatively to solve problems and develop solutions.



# Software Capability

Prism Resources' engineers and associates are highly provisioned with the following software:

- ✔ Cadmine®
- ✔ Datamine®
- ✔ Deswik®
- ✔ NPV Scheduler® (Open Pit Optimisation)
- ✔ Mineable Resource Optimiser (MRO®)
- ✔ Mineable Shape Optimiser (MSO®)
- ✔ Integrated Short Term Scheduler (ISDS®)
- ✔ Talpac®
- ✔ Whittle®
- ✔ MicroStation®
- ✔ Arena® (simulation)
- ✔ SimMine® (simulation)
- ✔ Simio® (simulation)
- ✔ Ventsim®
- ✔ Vuma®
- ✔ @ Risk®



# Group Clients





## MINING CONSULTING

### Project Management

- ✔ Desktop to Feasibility Studies
- ✔ Mineral Resource Management

### Underground Projects

- ✔ Desktop to Feasibility Studies
- ✔ Resource optimisation
- ✔ Resource to reserve conversion
- ✔ Mine design & scheduling
- ✔ Mine optimization & Trade-off studies
- ✔ Competent Person Reports

### Open Pit Projects

- ✔ Desktop to Feasibility Studies
- ✔ Resource to Reserve conversion
- ✔ Mine design & scheduling
- ✔ Pit Optimisation
- ✔ Competent Person Reports

### Finance

- ✔ Cost analysis and estimation
- ✔ Capital assessments of projects
- ✔ Financial evaluation and analysis
- ✔ Monte Carlo Simulation

### Geotechnical Design & Modelling

- ✔ 3 - Dimensional geotechnical modelling

### Geological Design & Modelling

- ✔ 3 - Dimensional geological modelling
- ✔ Exploration geology
- ✔ Resource estimation

## Mineral Resource Management

- ✔ The Management of MRM projects

## HYDRAULIC RE-MINING

- ✔ Project design
- ✔ Re-mining equipment manufacturing
- ✔ Project construction / installation
- ✔ Hydraulic re-mining

## MANUFACTURING

### General Engineering

- ✔ Repair and reconditioning of mining components

### Design

- ✔ Engineering consulting & solutions
- ✔ Damper control valves
- ✔ Vibrating screens and feeders
- ✔ Steel structures, hoppers, chutes, etc.

### Manufacturing and Repairs of Equipment

- ✔ Plant equipment, vibrating feeders, grizzlies feeders & panels, storage bins, winch and rope guards, screw feeders, rotary valves, flapper valves, automated tip-cages, machined components, conveyor pulleys, crusher cones, samplers, valves, pumps, crane wheels, scrapers, hoppers, loco's, scraper winches, damper control valves, crushers, magnetics drum separators, on-site bore mill seal landing machining, rotary valve repairs, etc.

## Contact Us

**Office Physical Address:**  
62 Avondale Crescent  
Midstream Estates  
1692

**Factory Physical Address:**  
22 Frans du Toit Street  
Rosslyn

**Postal Address:**  
PostNet Suite #854  
Private Bag x1007  
Lyttleton  
0140

**Tel:** + 27 (0) 82 319 6317 | +27 (0) 82 561 8732  
**Email:** info@prysm.co.za | riaan@prysm.co.za | chereen@prysm.co.za  
**Web:** www.prysm.co.z